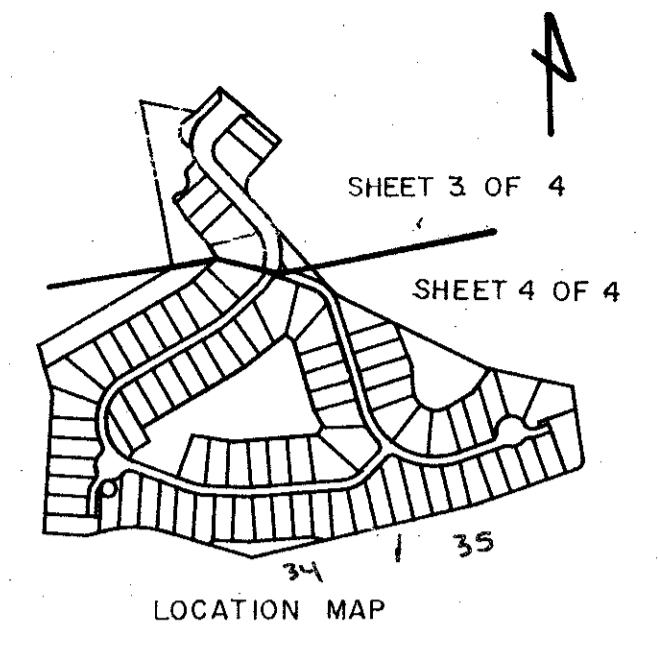


# THE LAKES OF SUTTON PLACE

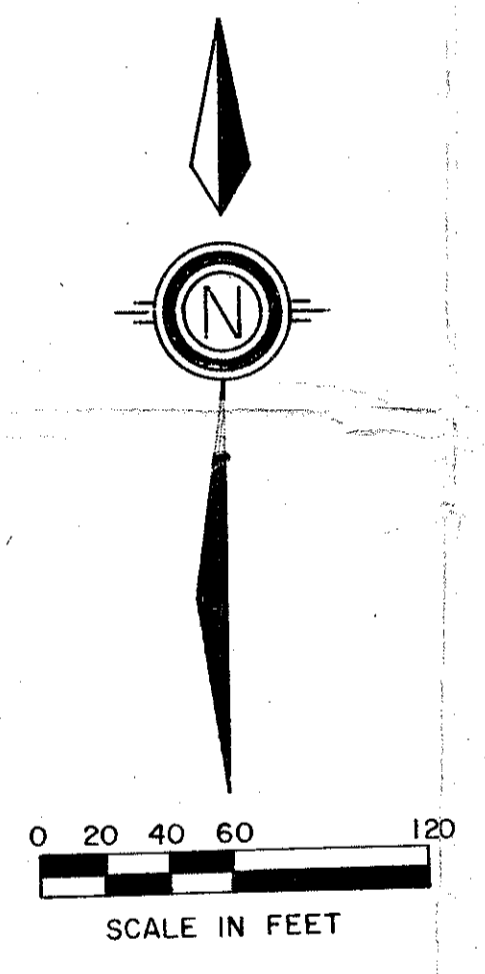
PART OF THE POLO CLUB P.U.D.  
BEING A REPLAT OF A PORTION OF TRACT II, "THE POLO CLUB PLAT II" (P.B. 57 PGS. 46 - 49)  
SITUATE IN SECTIONS 34 AND 35, TOWNSHIP 46 SOUTH, RANGE 42 EAST  
PALM BEACH COUNTY, FLORIDA

1988

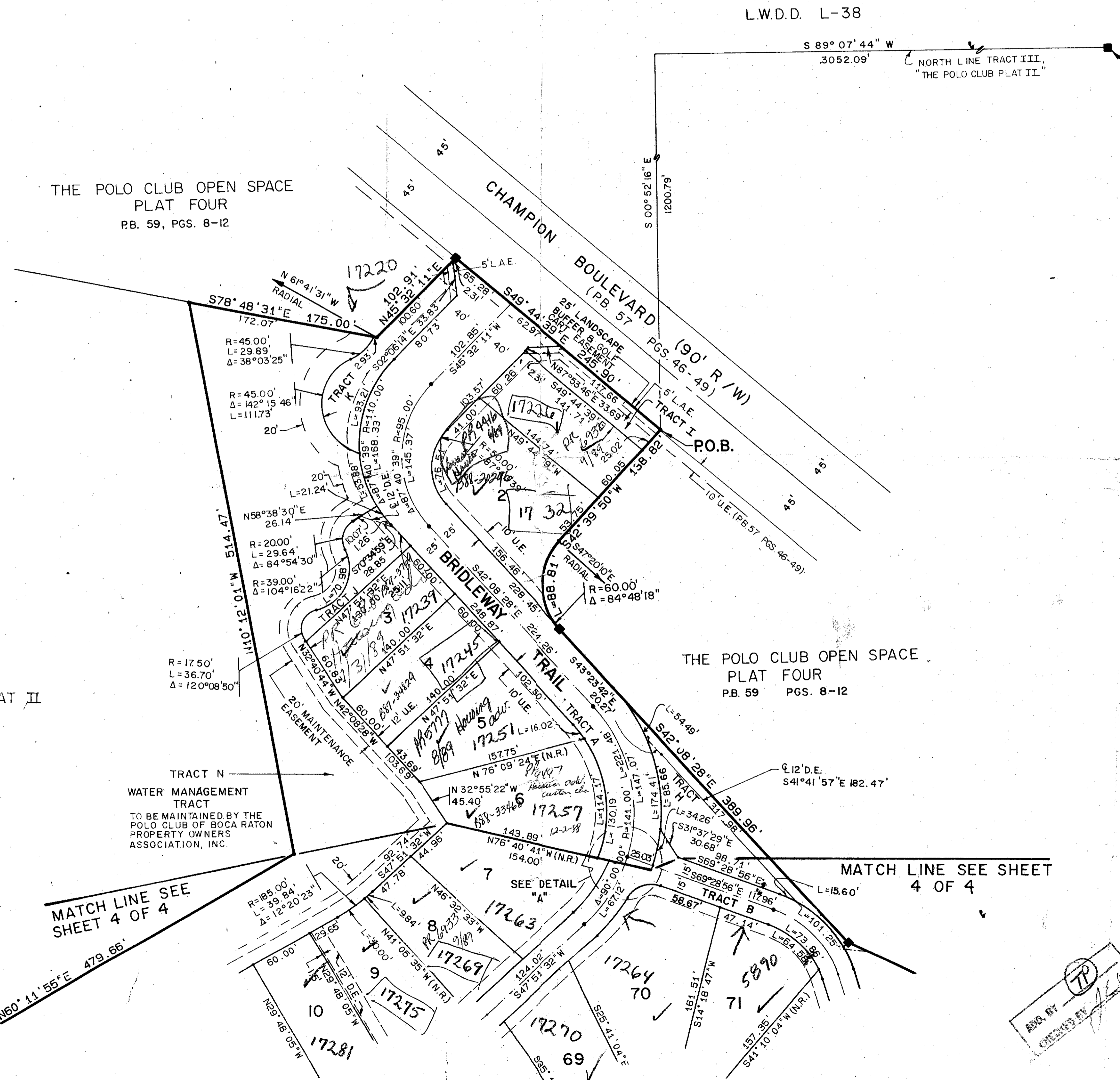
SHEET 3 OF 4



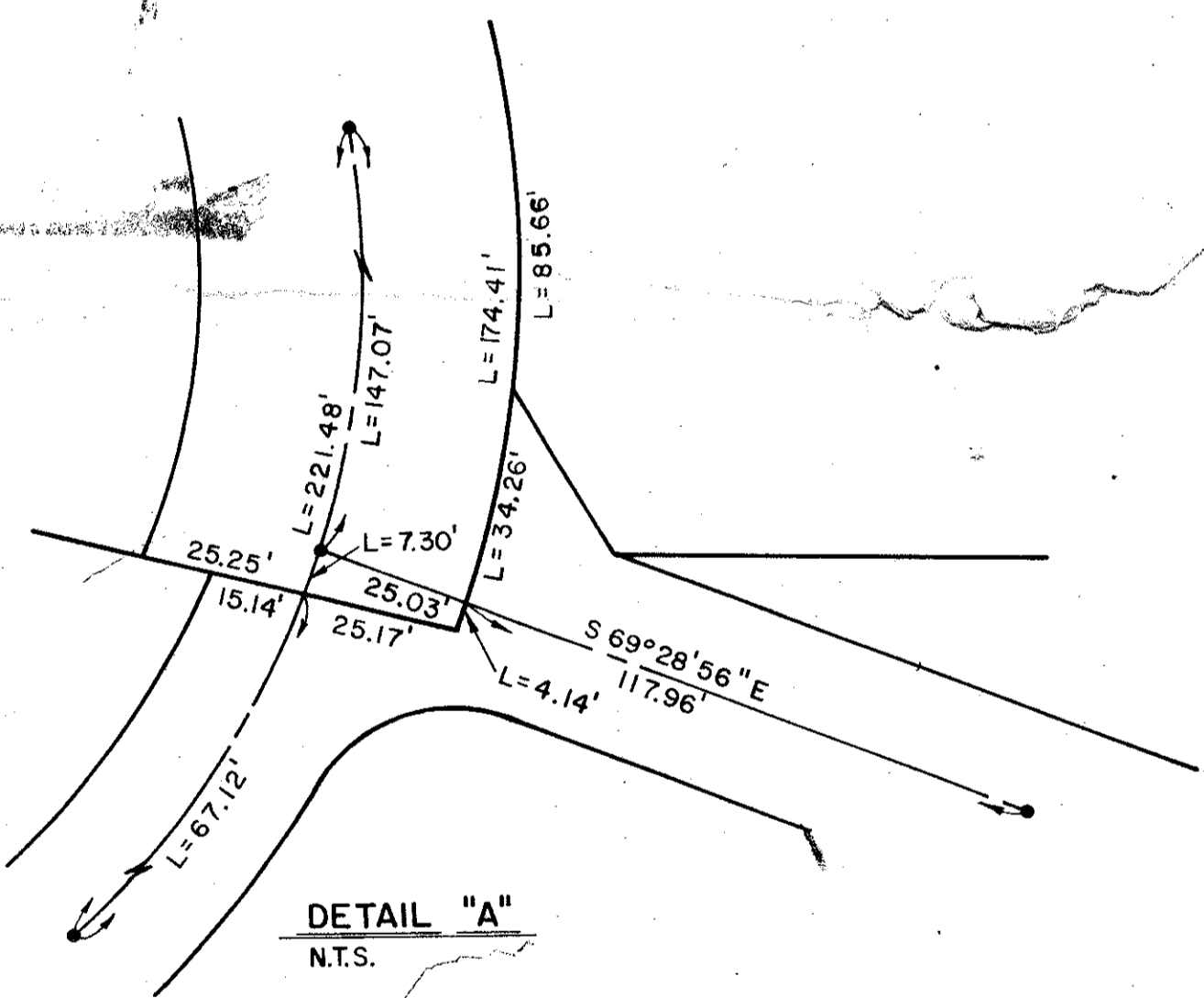
STATE OF FLORIDA  
COUNTY OF PALM BEACH  
THIS PLAT WAS FILED FOR  
RECORD \_\_\_\_\_  
THIS \_\_\_\_\_ DAY OF \_\_\_\_\_  
AD, 1988 AND DULY RECORDED  
IN PLAT BOOK \_\_\_\_\_ ON PAGES  
\_\_\_\_\_ AND \_\_\_\_\_  
JOHN B. DUNKLE, CLERK  
BY: \_\_\_\_\_, D.C.



THE POLO CLUB PLAT II  
P.B. 57 PGS. 46-49



P.O.C.  
N.E. CORNER TRACT III  
"THE POLO CLUB PLAT II"  
P.B. 57, PGS. 46-49



DETAIL "A"  
N.T.S.

MATCH LINE SEE SHEET 4 OF 4

MATCH LINE SEE SHEET 4 OF 4

Parcel L  
Polo Club

0436-009

60/93

STANLEY/WANTMAN, INC.  
2000 LOHARD STREET, WEST PALM BEACH, FL 33407 (305) 842-7444

DRAWN	M.H.C.	DATE	MARCH, 1988
CHECKED	W.B.H.	SCALE	1"=60'
DRAWING NO.	09676PL		

THE LAKES OF SUTTON PLACE  
PART OF  
THE POLO CLUB P.U.D.

*Handwritten notes:*  
11/11/88  
25/6/88  
Parcel L  
Polo Club  
17220  
17221  
17222  
17223  
17224  
17225  
17226  
17227  
17228  
17229  
17230  
17231  
17232  
17233  
17234  
17235  
17236  
17237  
17238  
17239  
17240  
17241  
17242  
17243  
17244  
17245  
17246  
17247  
17248  
17249  
17250  
17251  
17252  
17253  
17254  
17255  
17256  
17257  
17258  
17259  
17260  
17261  
17262  
17263  
17264  
17265  
17266  
17267  
17268  
17269  
17270  
17271  
17272  
17273  
17274  
17275  
17276  
17277  
17278  
17279  
17280  
17281  
17282  
17283  
17284  
17285  
17286  
17287  
17288  
17289  
17290  
17291  
17292  
17293  
17294  
17295  
17296  
17297  
17298  
17299  
17300